



# GAT MONTHLY MEMBERSHIP PROGRESS REPORT

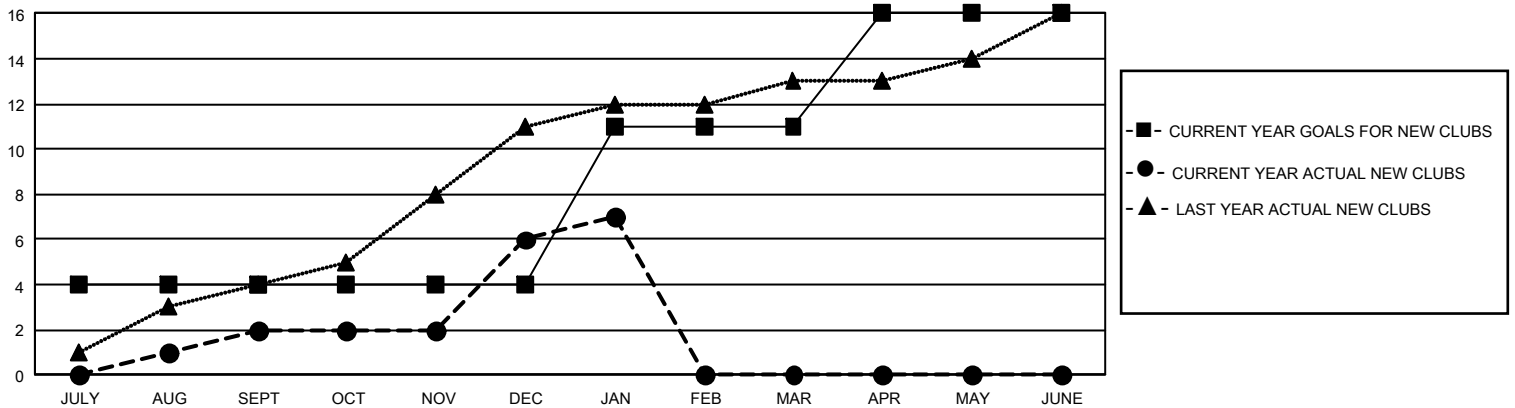
Results as of: 1/31/2025

## GMT Constitutional Area 8, Group D

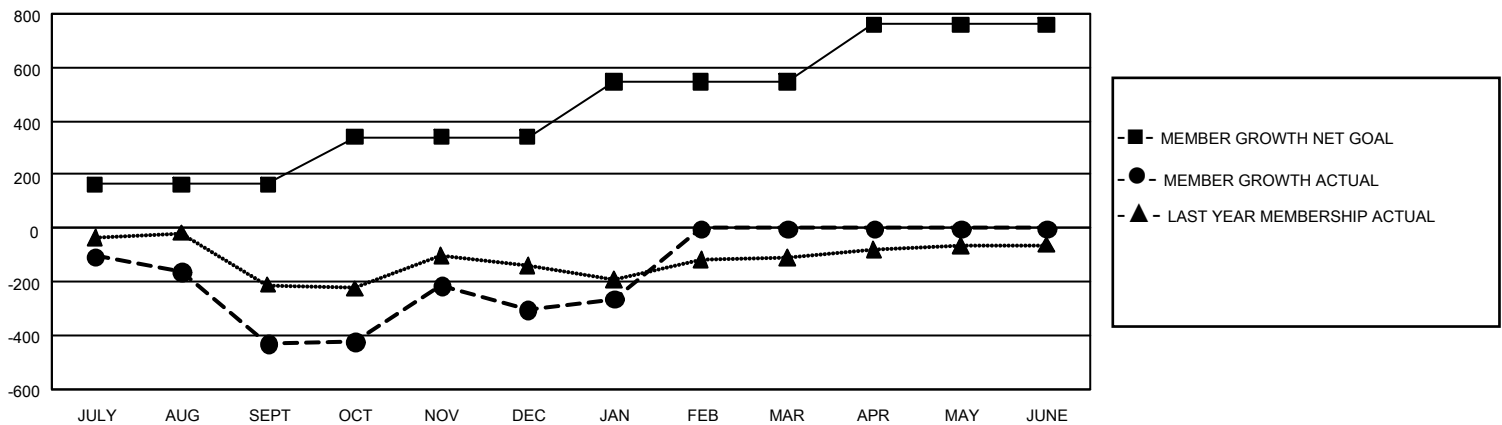
REPORT DOES NOT INCLUDE CLUBS IN UNDISTRICTED AREAS.

| Clubs                 |               |           |               | Members               |                        |                      |                                              |
|-----------------------|---------------|-----------|---------------|-----------------------|------------------------|----------------------|----------------------------------------------|
| RESULTS FOR 2024-2025 |               |           |               | RESULTS FOR 2024-2025 |                        |                      |                                              |
| QUARTER               | NEW CLUB GOAL | NEW CLUBS | DROPPED CLUBS | QUARTER               | MEMBER GROWTH NET GOAL | MEMBER GROWTH ACTUAL | DROPPED MEMBERS ACTUAL (including transfers) |
| JULY/AUG/SEPT         | 12            | 2         | 3             | JULY/AUG/SEPT         | 163                    | 223                  | 619                                          |
| OCT/NOV/DEC           | 0             | 4         | 10            | OCT/NOV/DEC           | 178                    | 602                  | 429                                          |
| JAN/FEB/MAR           | 21            | 1         | 1             | JAN/FEB/MAR           | 206                    | 101                  | 43                                           |
| APR/MAY/JUNE          | 15            | 0         | 0             | APR/MAY/JUNE          | 214                    | 0                    | 0                                            |

GOALS AND ACTUAL NEW CLUBS CUMULATIVE



GOALS AND ACTUAL MEMBERS CUMULATIVE



DROPPED CLUBS: 14

80 CLUBS OF 195 ADDED 1 OR MORE NEW MEMBERS

### GENDER DISTRIBUTION

|                      |                |
|----------------------|----------------|
| MALE                 | 1,491 (38.28%) |
| FEMALE               | 2,402 (61.67%) |
| NON BINARY           | 1 (0.03%)      |
| PREFER NOT TO ANSWER | 1 (0.03%)      |

### DROPPED MEMBERS

|                |       |
|----------------|-------|
| DECEASED       | 8     |
| CLUB CANCELLED | 272   |
| OTHER          | 806   |
| TOTAL          | 1,086 |

[CLICK HERE FOR CUMULATIVE MEMBERSHIP DATA](#)

TOTAL FAMILY UNIT MEMBERS 0

FAMILY MEMBERS PAYING HALF DUES 0